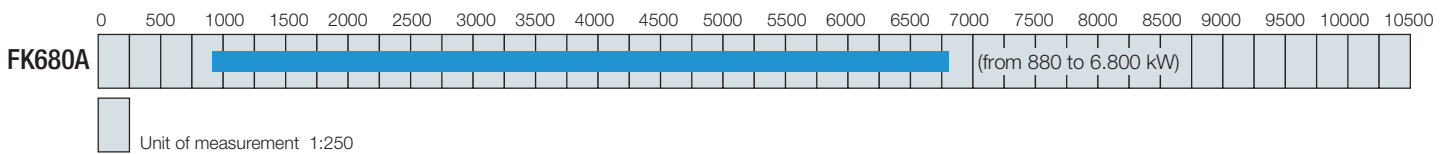
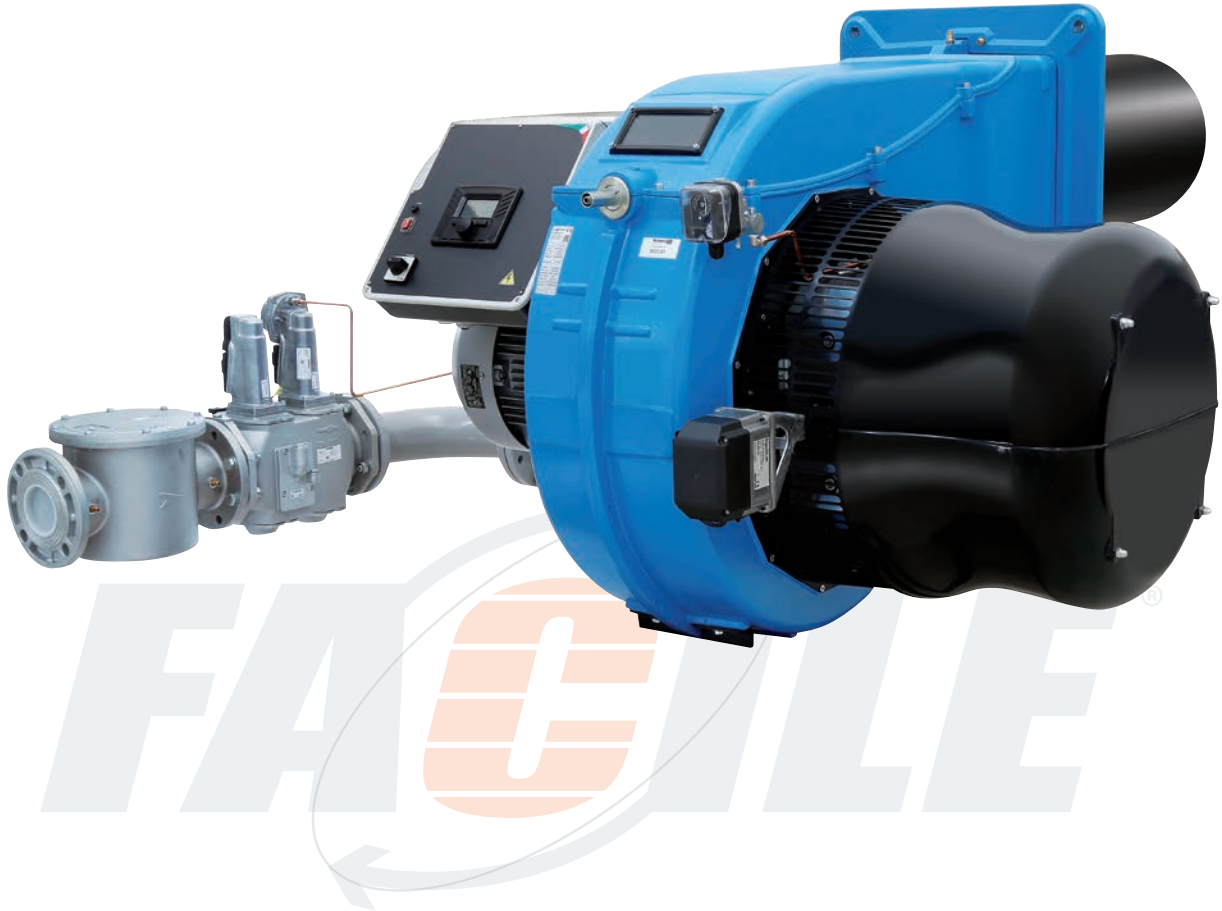


FACILE series FK680A

SMART BURNER - new generation
 Low NO_x gas burner - Class 2 EN676



AUTOMATIC COMMISSIONING
 IN JUST A FEW MINUTES



ADAPTS THE BURNER TO
 ALL HEAT GENERATORS
 AND PROCESS



AUTOMATICALLY ADJUSTS
 ENVIRONMENTAL VALUES



CONSTANT AND COMPLETE
 MONITORING ON VARIOUS LEVELS

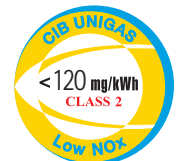


GUARANTEES REGULATORY
 COMPLIANCE



ECONOMICALLY SUSTAINABLE,
 RETURN ON INVESTMENT IN THE
 SHORT-TO-MEDIUM TERM

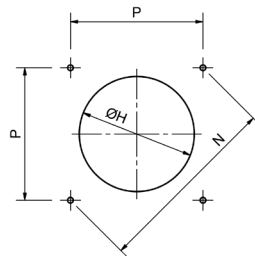
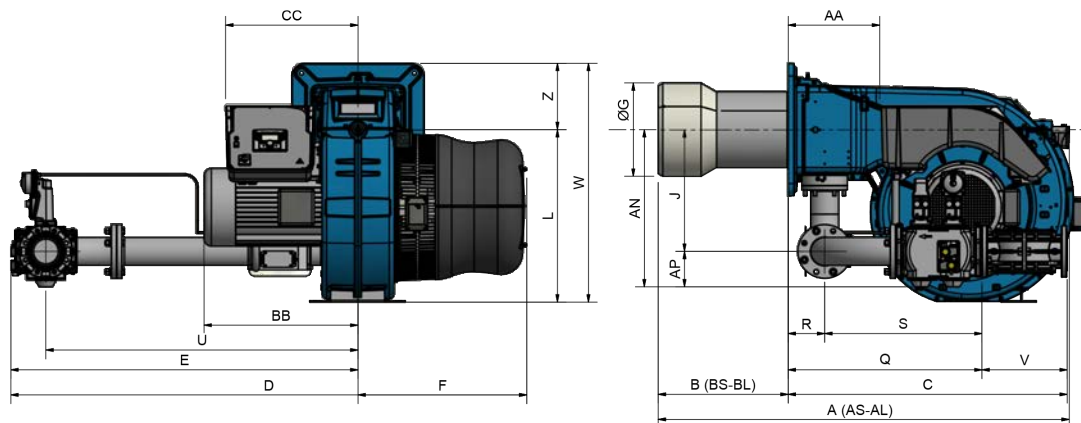
CIB UNIGAS
 The Smart Combustion



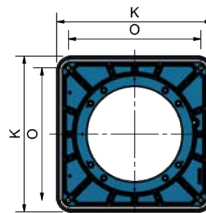
Burner with emissions
 below 120 mg/kWh

TECHNICAL CHARACTERISTICS

Model	Power kW	Power kW		Electrical power supply	Fan motor kW	Gas fittings	Noise level dBA
		min.	max.				
FK680A	M-.xx.xR.IT.A.1.xxx	880	6.800	230/400 V 3N ac	15	DN65 - DN80 - DN100 - DN125	< 85



Recommended boiler hole



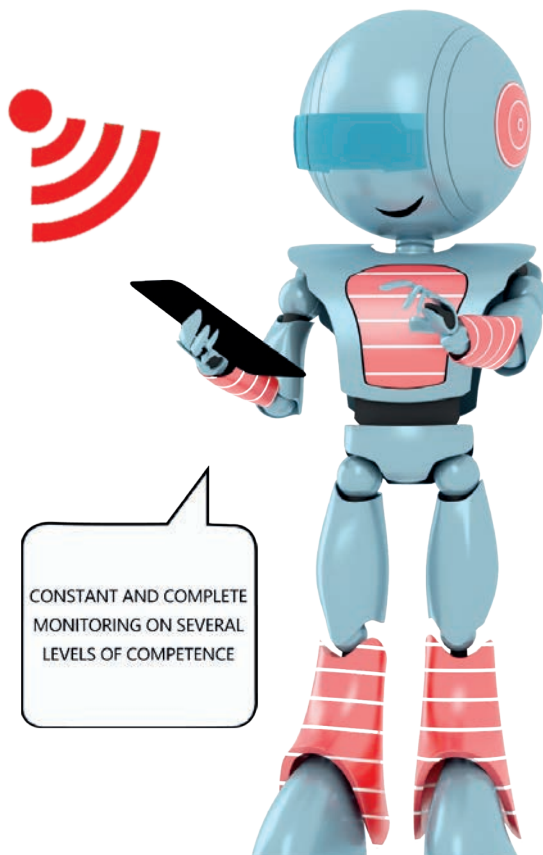
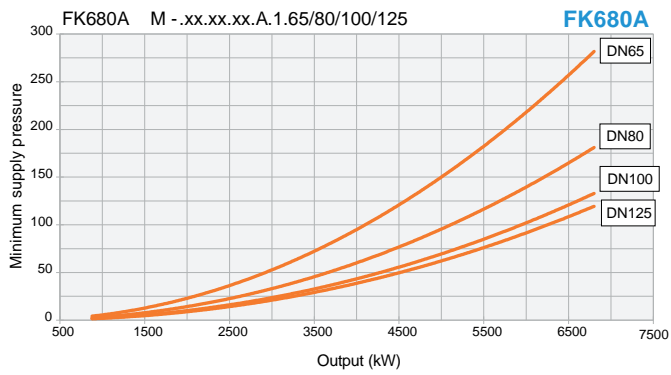
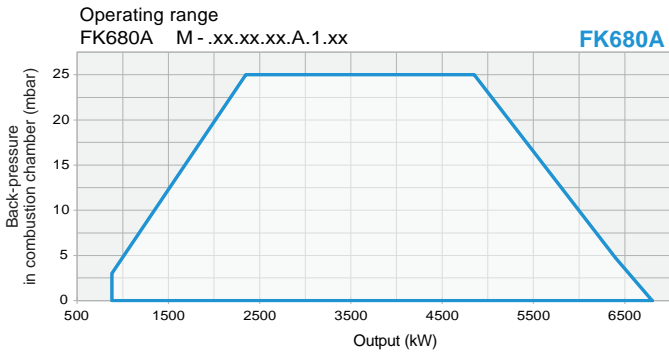
Burner flange

Model	Dimensions of packaging (mm)			
	l	p	h	kg
FK680A	2.180	1.540	1.220	

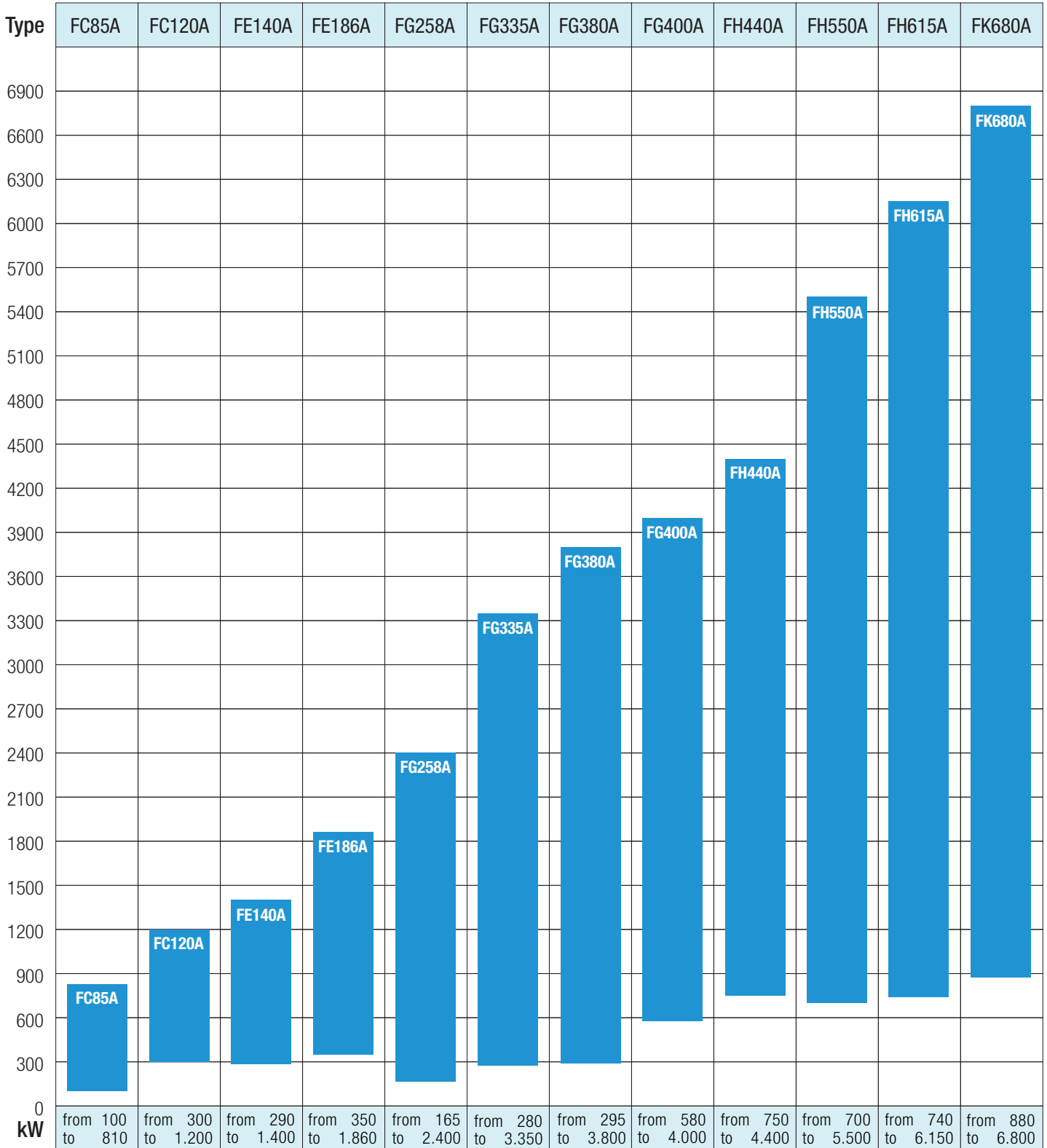
Indicative values

Model	Overall dimensions (mm)																													
	AA	AS	AL	BB	BS	BL	C	CC	D	E	F	G	H	J	K	L	M	N	O	P	Q	R	S	U	V	W	Y	Z		
																				min.		max.								
FK680A	M-.xx.xR.IT.A.1.65	366	1760	-	626	530	-	1230	540	2087	1398	689	340	380	490	540	700	M16	651	460	460	460	869	150	720	1273	294	970	328	270
FK680A	M-.xx.xR.IT.A.1.80	366	1760	-	626	530	-	1230	540	2089	1400	689	340	380	490	540	700	M16	651	460	460	460	889	150	740	1273	313	970	328	270
FK680A	M-.xx.xR.IT.A.1.100	366	1760	-	626	530	-	1230	540	2104	1415	689	340	380	490	540	700	M16	651	460	460	460	794	150	645	1273	353	970	328	270
FK680A	M-.xx.xR.IT.A.1.125	366	1760	-	626	530	-	1230	540	2120	1431	689	340	380	490	540	700	M16	651	460	460	460	1009	150	860	1273	479	970	328	270

indicative values

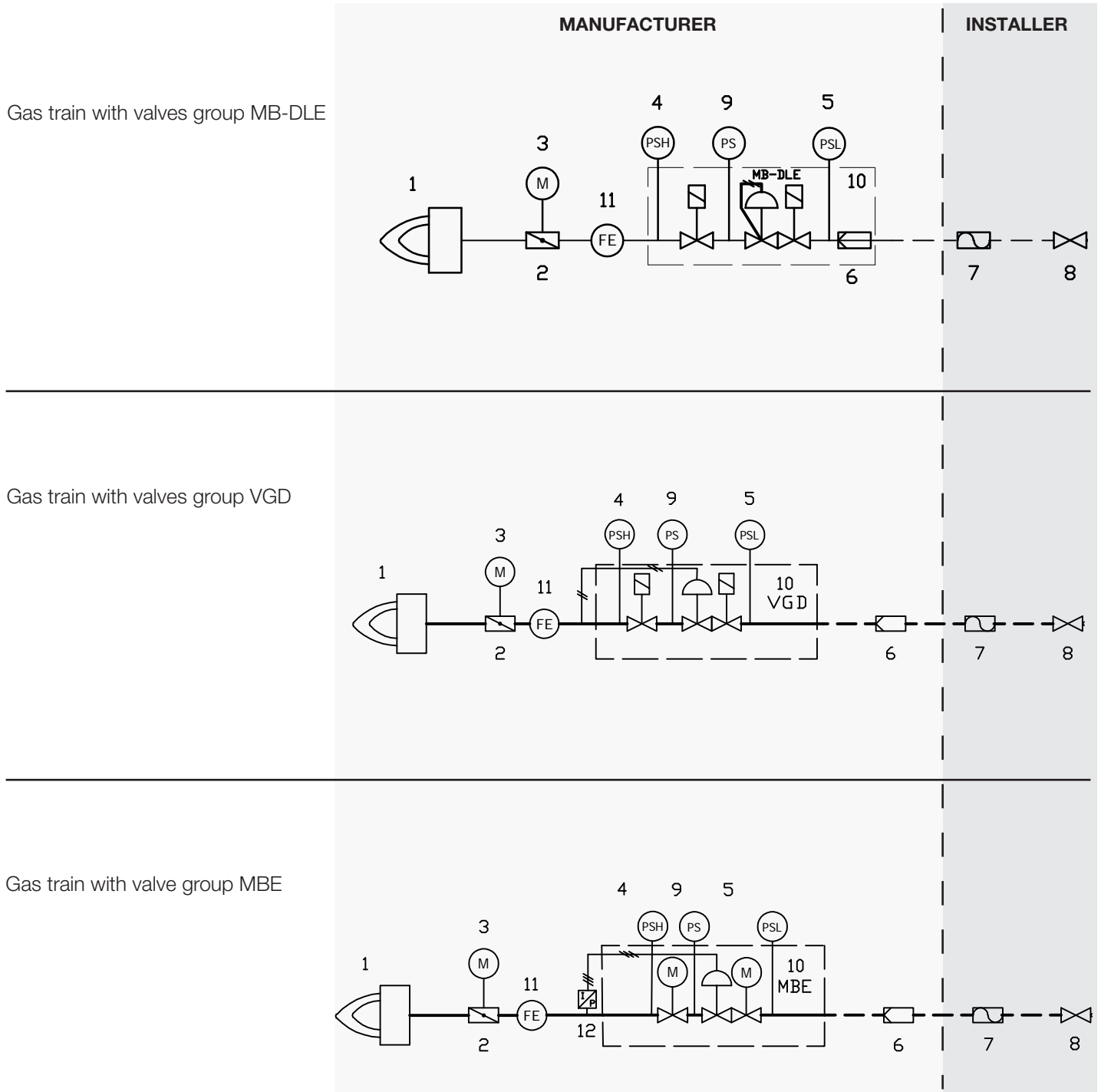


LOW NO_x GAS BURNER RANGE



Unit of measurement 1:300



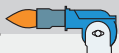



LEGEND








- | | |
|--|------------------------------------|
| 1 Burner | 7 Anti-vibration joint |
| 2 Butterfly valve | 8 Manual gas shut-off valve |
| 3 Servocontrol | 9 Leak control gas pressure switch |
| 4 Maximum gas pressure switch (optional) | 10 Valve group |
| 5 Minimum gas pressure switch | 11 Flow sensor |
| 6 Gas filter | 12 MBE valves pressure sensor |

FACILE SERIES BURNERS LEGEND



TYPE FC FE FG FH FK FN	
MODEL A - STANDARD P - PREMIXED X - LOW NO _x	

A.M- . MD . SR . IT. A . 1. 50 . FA

FUEL M - NATURAL GAS L - LPG	
OPERATION MD - MODULATING	
COMBUSTION HEAD AND AIR INLET SR - STANDARD COMBUSTION HEAD WITH SILENCER LR - LONG COMBUSTION HEAD WITH SILENCER	
COUNTRY OF DESTINATION IT ITALY ... OTHER DESTINATIONS ON REQUEST	
BURNER MANUFACTURE A STANDARD	
EQUIPMENT 1 2 GAS VALVES AND LEAKAGE CONTROL 8 2 GAS VALVES + LEAKAGE CONTROL AND MAXIMUM GAS PRESSURE SWITCH	
GAS CONNECTION 32 1"¼ 65 DN65 40 1"½ 80 DN80 50 2" 100 DN100 125 DN125	
ELECTRONIC VERSION FA Electronically controlled burners FB Electronically controlled burners with inverter FC Electronically controlled burners with provision for inverter	